



**DESIGNCREW**

**CONCEPTUALIZE. DESIGN. PRINT.**

☎ 8421892164 | @ info@designcrew.in | 🌐 www.designcrew.in

📍 408, West Wing, Aurora Towers, MG Road, Camp, Pune - 411 001

# ABOUT US

---

## WHO WE ARE:

At The DesignCrew, creativity isn't just a service it's our culture. We are a passionate team of designers, thinkers, and storytellers dedicated to turning brands into powerful visual identities.

## What We Believe:

We believe great design goes beyond looking good it solves problems, tells stories, and builds connections.

## Our Approach:



Understand your  
brand inside-out



Strategize with clear  
creative thinking



Create designs that are  
beautiful, functional, & effective



Deliver excellence at  
every step



# Why Choose The DesignCrew?



## Creative Excellence

Every pixel, every line crafted with purpose.



## End-to-End Solutions

From brand launch to product packaging, we cover it all.



## Client-Centric Approach

We collaborate, communicate, and co-create with you.



## Proven Track Record

Successful partnerships across industries including hospitality, FMCG, real estate, and lifestyle.



## Passion Meets Precision

We don't just deliver - we deliver brilliance.



## Worked with clients **ACROSS THE GLOBE**

### LOCAL KNOWLEDGE & GLOBAL COVERAGE

Having gained in-depth knowledge about the local markets of Pune, we have developed an understanding of the consumer mindset and are thus able to place your products and design them in accordance to the same, such that it attracts maximum attention. Our reach is however not limited to India as we have undertaken various brand development projects and designing assignments for many clients across Dubai.





# WHAT WE DO?



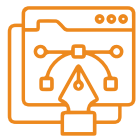
## Brand Identity Design

Logos, visual guidelines,  
complete brand systems



## Print Design

Brochures, business cards,  
standees, flyers, catalogs, menus



## Website UI/UX

Aesthetic, user-centric  
digital experiences



## Packaging Design

Innovative, retail-ready  
packaging that sells



## Social Media & Digital Design

Posts, ad creatives, campaigns  
that boost engagement



## Custom Design Projects

Tailored solutions for  
every creative need



# CLIENTS



# BRANDING

Project 1



## Color Palette

#1ebcc5

#b0d082

## Typography

LOGO

AP AESTHETICS

Lavish Regular

A A B B C c D d E e F f G g  
1 2 3 4 5 6 7 8 9 ! % & / ( ) = ?

Gotham Book

A a B b C c D d E e F f G g  
1 2 3 4 5 6 7 8 9 ! % & / ( ) = ?

Aa









# BRANDING

Project 2



# Color Palette



# Typography

LOGO

Shambhu

AC Regular

Aa Bb Cc Dd Ee Ff Gg  
123456789!@#%&'()\*+=?

Jenthill Regular

Aa Bb Cc Dd Ee Ff Gg  
Hh Ii Jj Kk Ll Mm Nn Oo Pp Qq

Aa



**Shambhu**  
*We deliver taste*



Customer Care No. 7972147445    [aditimilkandmilkproduct@gmail.com](mailto:aditimilkandmilkproduct@gmail.com)  
At Post, Nimbut - Nira RS Tal. Baramati, Dist - Pune 412102





# BRANDING

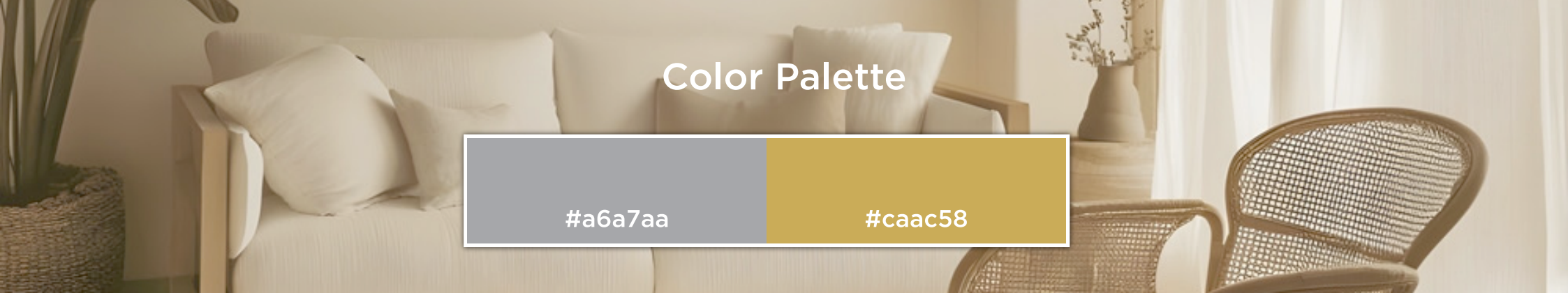
Project 3

LAVISH  
CUSTOMISED  
MODULAR FURNITURE *Interio*

LAVISH  
CUSTOMISED  
MODULAR FURNITURE *Interio*

LAVISH  
CUSTOMISED  
MODULAR FURNITURE *Interio*





## Color Palette

#a6a7aa

#caac58

## Typography

LOGO

LAVISH  
CUSTOMISED  
MODULAR FURNITURE  
*Interio*

Lavish Regular

A A B B C c D d E e F f G g  
1 2 3 4 5 6 7 8 9 ! % & / ( ) = ?

Nova Quinta Regular

A a B b C c D d E e F f G g  
1 2 3 4 5 6 7 8 9 ! % & / ( ) = ?

Aa





# BRANDING

Project 4





## Color Palette

#009949

#e86a41

## Typography

LOGO

LOREMLOREM

LOREMLOREM

Aa





**Ingredients:**  
Lemon Fruit, Mustard Oil, Green Chilli, Salt, Kashmiri Red Chilli Powder, Turmeric Powder, Kalonji.

**Usage Instructions:**  
Stir well before use.  
Only use dry spoon for the pickle.  
Store in cool and dry place. Keep away from water



Net Wt. 250g



# LEMON PICKLE WITH OIL

RICH SOURCE OF VITAMIN C  
SUN-DRIED | NO PRESERVATIVES



Manufactured & Packed By:  
**NATURE LEAF KITCHEN**  
36-E(ext.), Bharat Nagar, Jammu - 180002  
Customer Care: +91 7051153516  
Email: customercare@natureleafkitchen.com

LIC. No.  
**fssai** 21024152000554

nature leaf jammu  
www.nature-leaf.com




Batch No. :  
Packaging Date :  
Best before 6 months from the date of Mfg.

M.R.P.  
(Incl of all Taxes)



**Ingredients:**  
Lemon Fruit, Table Salt, Rock Salt, Kashmiri Red Chilli Powder, Black Pepper, Cinnamon, Thick Cardamom, Clove (Laung), Carrom Seeds (Ajwain), Cumin Seeds.

**Usage Instructions:**  
Stir well before use.  
Only use dry spoon for the pickle.  
Store in cool and dry place. Keep away from water



Net Wt. 250g



# LEMON PICKLE WITHOUT OIL

RICH SOURCE OF VITAMIN C  
SUN-DRIED | NO PRESERVATIVES



Manufactured & Packed By:  
**NATURE LEAF KITCHEN**  
36-E(ext.), Bharat Nagar, Jammu - 180002  
Customer Care: +91 7051153516  
Email: customercare@natureleafkitchen.com

LIC. No.  
**fssai** 21024152000554

nature leaf jammu  
www.nature-leaf.com



Batch No. :  
Packaging Date :  
Best before 6 months from the date of Mfg.

M.R.P. : ₹ 249  
(Incl of all Taxes)



**Ingredients:**  
Raw Mango Fruit, Mustard Oil, Fennel Seeds, Fenugreek Seeds, Kalonji, Salt, Kashmiri Red Chilli Powder, Turmeric Powder.

**Usage Instructions:**  
Stir well before use.  
Only use dry spoon for the pickle.  
Store in cool and dry place. Keep away from water



Net Wt. 250g



# MANGO PICKLE

RICH SOURCE OF ANTI-OXIDANTS  
SUN-DRIED | NO PRESERVATIVES



Manufactured & Packed By:  
**NATURE LEAF KITCHEN**  
36-E(ext.), Bharat Nagar, Jammu - 180002  
Customer Care: +91 7051153516  
Email: customercare@natureleafkitchen.com

LIC. No.  
**fssai** 21024152000554

nature leaf jammu  
www.nature-leaf.com



Batch No. :  
Packaging Date :  
Best before 6 months from the date of Mfg.

M.R.P. : ₹ 249  
(Incl of all Taxes)





# BRANDING

Project 5





## Color Palette

#2d417f

#e66a41

## Typography

LOGO

**Kitchen's**

Nevada Regular

Aa Bb Cc Dd Ee Ff Gg  
1 2 3 4 5 6 7 8 9 ! % & / ( ) = ?

October Twilight

*Aa Bb Cc Dd Ee Ff Gg*  
*1 2 3 4 5 6 7 8 9 ! % & / ( ) = ?*

Aa







# BRANDING

Project 6





## Color Palette

#014f40

#2e8f46

## Typography

LOGO

LOREMLOREM

Aa Bb Cc Dd Ee Ff Gg  
1 2 3 4 5 6 7 8 9 ! % & / [ ] = ?

LOREMLOREM

Aa Bb Cc Dd Ee Ff Gg  
1 2 3 4 5 6 7 8 9 ! % & / [ ] = ?

Aa









# BRANDING

Project 7





## Color Palette

#4f321f

#e6a224

## Typography

LOGO

LOREMLOREM

LOREMLOREM

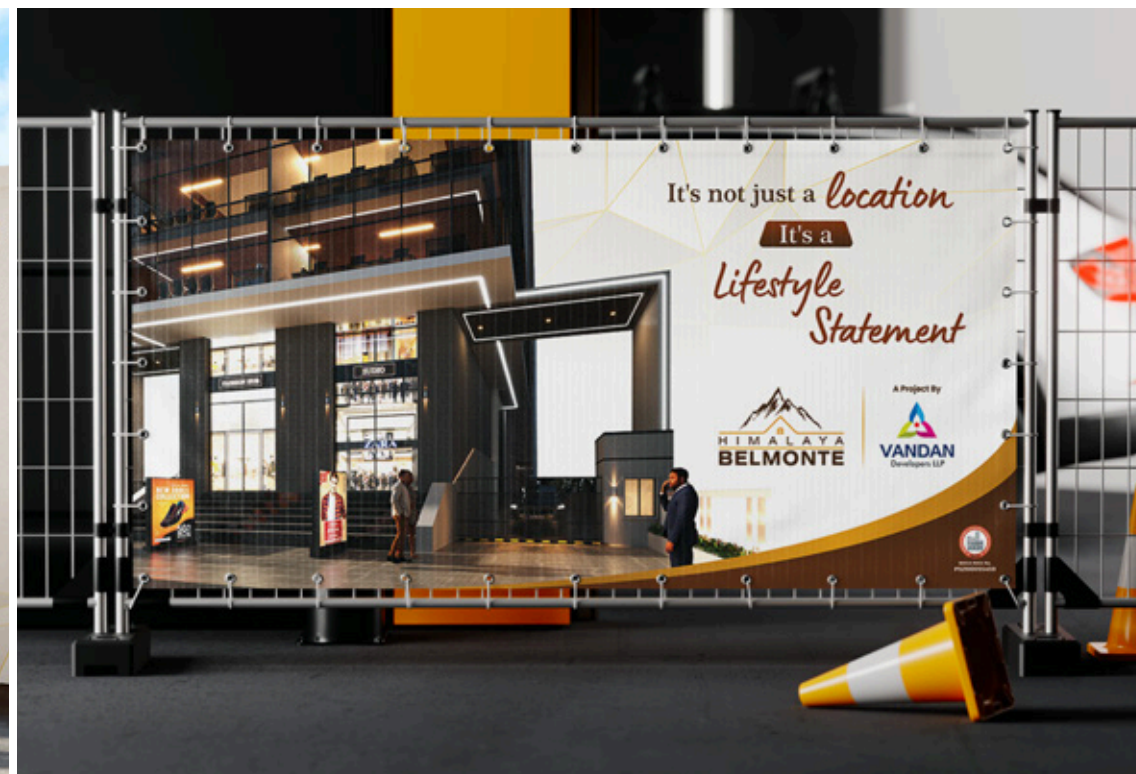
Aa



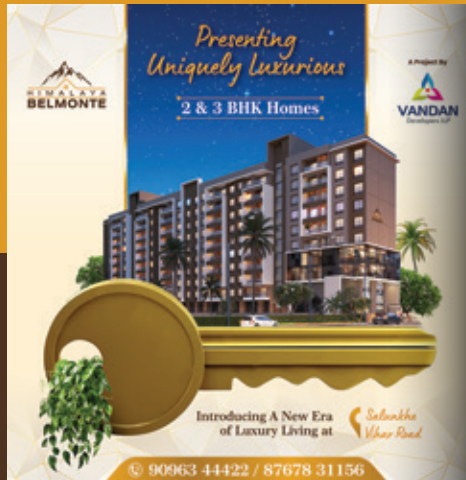














# BRANDING

Project 8



**BRAMHACHAITANYA**  
— DAIRY FARM —



**BRAMHACHAITANYA**  
— DAIRY FARM —



**BRAMHACHAITANYA**  
— DAIRY FARM —

## Color Palette

#1b75bb

#8bc53f

## Typography

LOGO

LOREMLOREM

LOREMLOREM

Aa



